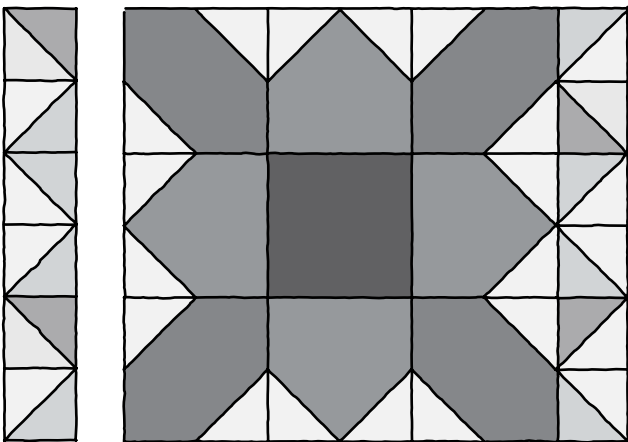
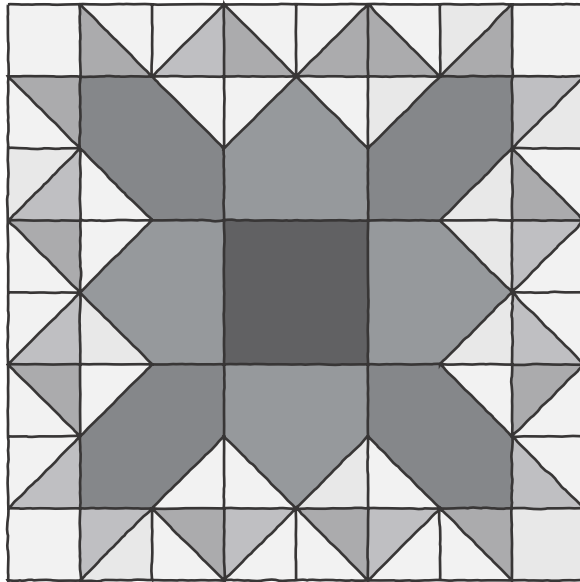




beyond the reef

stitch-episode1
© "stars for stitch"



each 24" x 24" finished block will require:

center nine patch:

- (1) one center square - 6-1/2" x 6-1/2"
- (4) four point squares - 6-1/2" x 6-1/2"
- (4) four corner squares - 6-1/2" x 6-1/2"
- (16) squares for snowballing or dog ear corners
- 3-1/2" x 3-1/2"

and for the outer half square triangles:

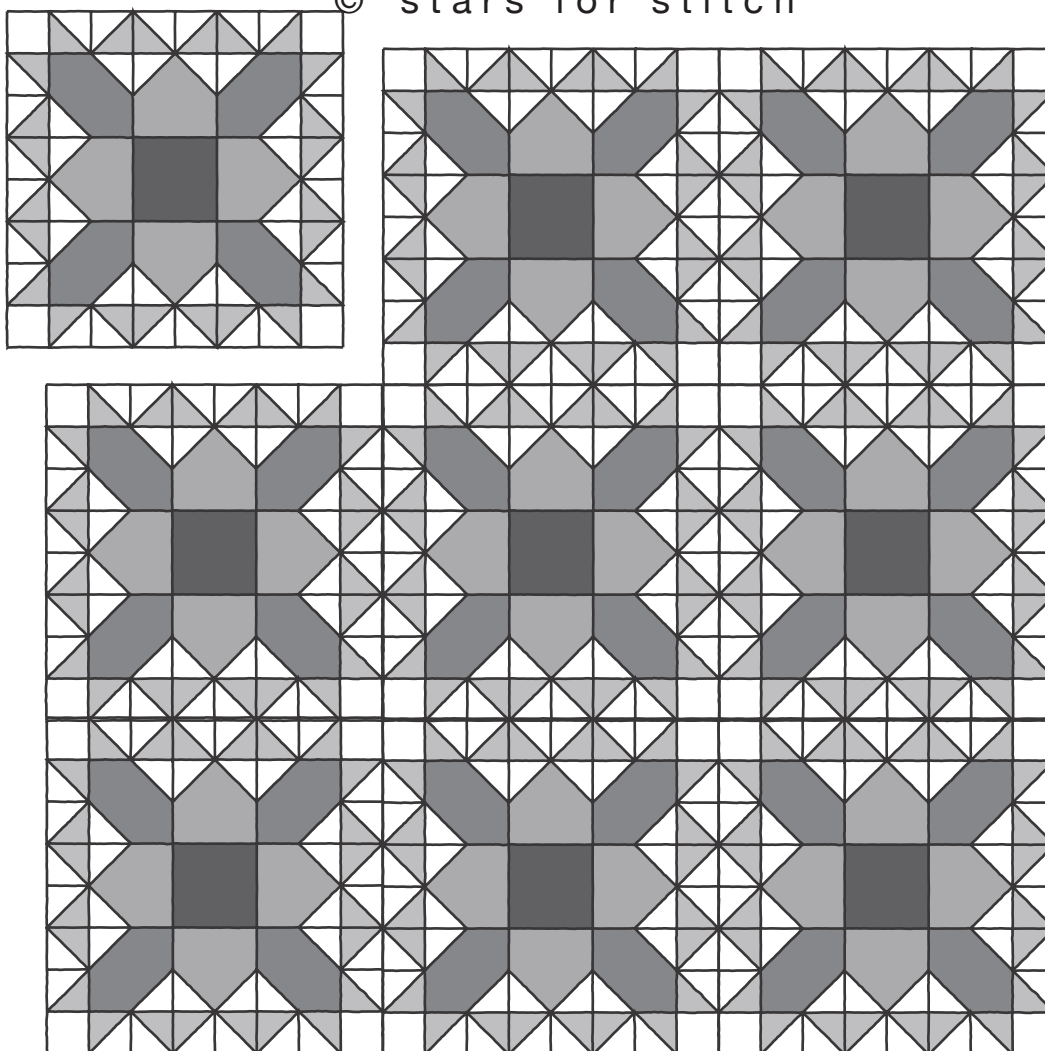
- (4) four corner squares 3-1/2" x 3-1/2"
- (12) twelve light squares - 4" x 4"
- (12) twelve dark squares - 4" x 4"
- (for a total of 24 - not 26 - half square triangles)
- trim half square triangle blocks to 3-1/2" x 3-1/2"



beyond the reef

stitch-episode1

© "stars for stitch"



layout above - 72-1/2" x 72-1/2"

center nine patch:

(9) nine center squares - 6-1/2" x 6-1/2"

(36) thirty six point squares - 6-1/2" x 6-1/2"

(36) thirty six corner squares - 6-1/2" x 6-1/2"

(144) one hundred forty four squares for snowballing or dog ear corners 3-1/2" x 3-1/2"

half square triangles borders:

(36) thirty six corner squares 3-1/2" x 3-1/2"

(108) one hundred eight light squares - 4" x 4"

(108) one hundred eight dark squares - 4" x 4"

note: trim half square triangle blocks to 3-1/2" x 3-1/2"

fat quarter bundle - daisy chain + 1/2 yard each of merriweather

binding: 1/2 yard for 2-1/4" straight grain backing w/3" overage: 4-1/2 yards